

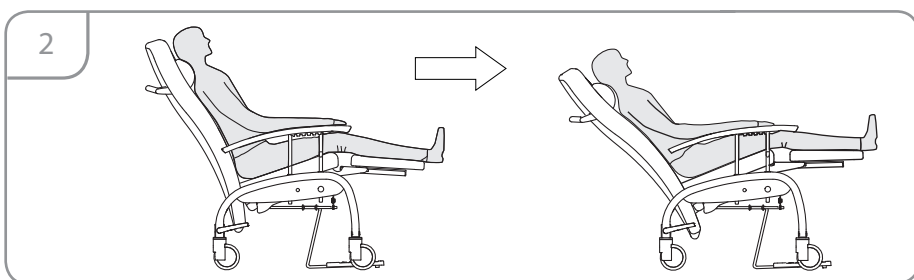
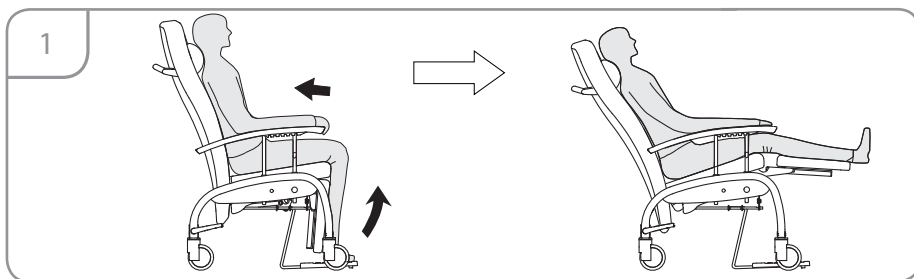
# Handleiding relaxzetel Fero Classic

## Manuel fauteuil relax Fero Classic

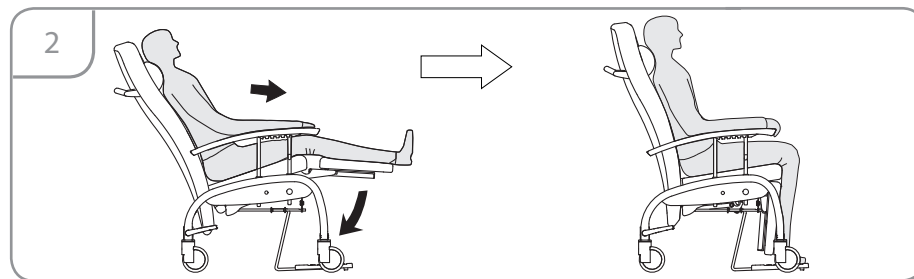
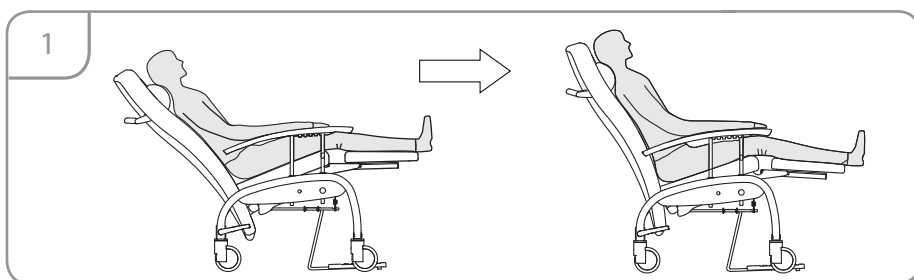
### Manual relax chair Fero Classic

### Gebrauchsanweisung Ruhesessel Fero Classic

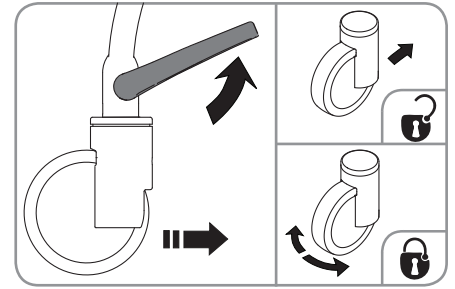
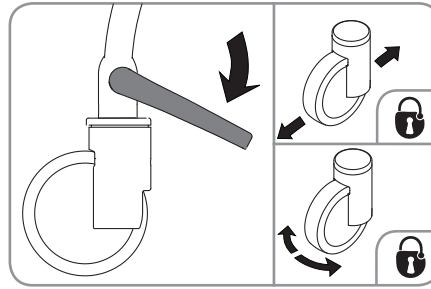
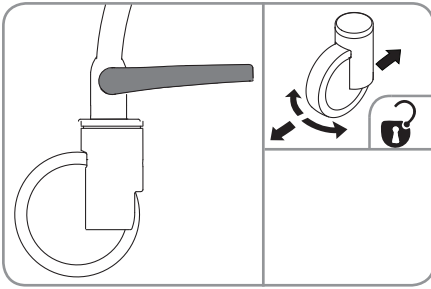
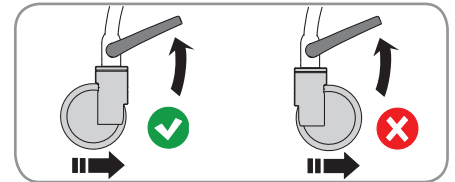
Van zitpositie naar relaxpositie | De position assise vers position relax  
From seating position to relax position | Von Sitzposition nach Relaxposition



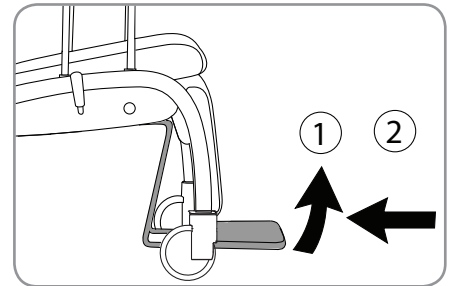
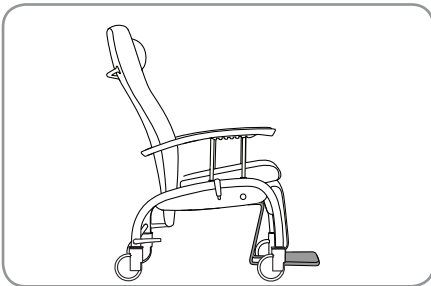
Van relaxpositie naar zitpositie | De position relax vers position assise  
From relax position to seating position | Von Relaxposition nach Sitzposition



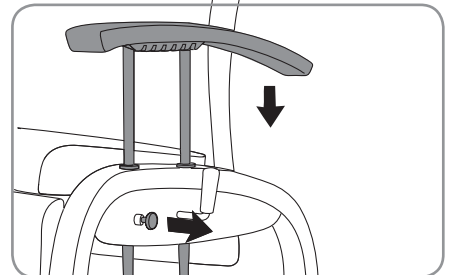
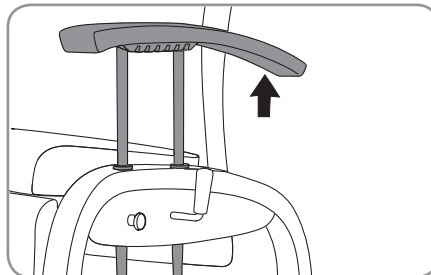
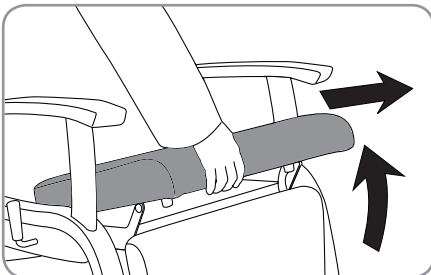
Centraal geremde wielen | Roues avec frein central  
 Central braking system | Rollen mit zentraler Bremse



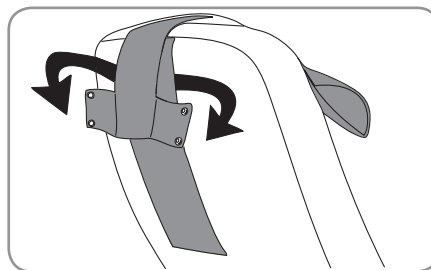
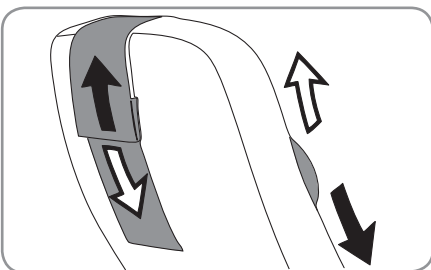
Voetenbank | Repose-pieds | Footrest | Fußstütze






Uitneembare zitting en Neerschuifbare Armleggers | Siège amovible et Accoudoirs abaissables  
 Removable seat cushion and Lowerable armrests | Abnehmbarer Sitz und Höhenverstellbare Armlehnen



Verstelbaar en demonteerbaar hoofd/nekkenkussen | Coussin tête/nuque réglable et démontable  
 Adjustable and removable head/neck cushion | Höhenverstellbares und abnehmbares Kopfstütz-/Nackenkissen



-  De Fero zetel is geschikt voor intern transport op vlakke bevoering. De armen dienen zich om veiligheidsredenen bij intern transport in de hoogste positie te bevinden. Bij stilstand dient de rem steeds geactiveerd te zijn.
-  Le fauteuil Fero peut être utilisé pour des transports internes sur sol lisse. Pour des raisons de sécurité, les accoudoirs doivent se trouver dans leur position la plus haute pendant le transport. A l'arrêt, le frein doit toujours être activé
-  The Fero chair is suited for indoor transport on a flat surface. For safety reasons, the armrests have to be put in their highest position during indoor transport. The brake always has to be activated when the chair is not moved.
-  Der Fero Sessel ist für internen Transport auf einer ebenen Fläche geeignet. Aus Sicherheitsgründen müssen die Armlehnen sich während des internen Transports in höchster Position befinden. Die Bremse muss immer gesperrt sein, wenn der Sessel stillsteht.